

How to get to our house on 128 Granite St. in Gardiner

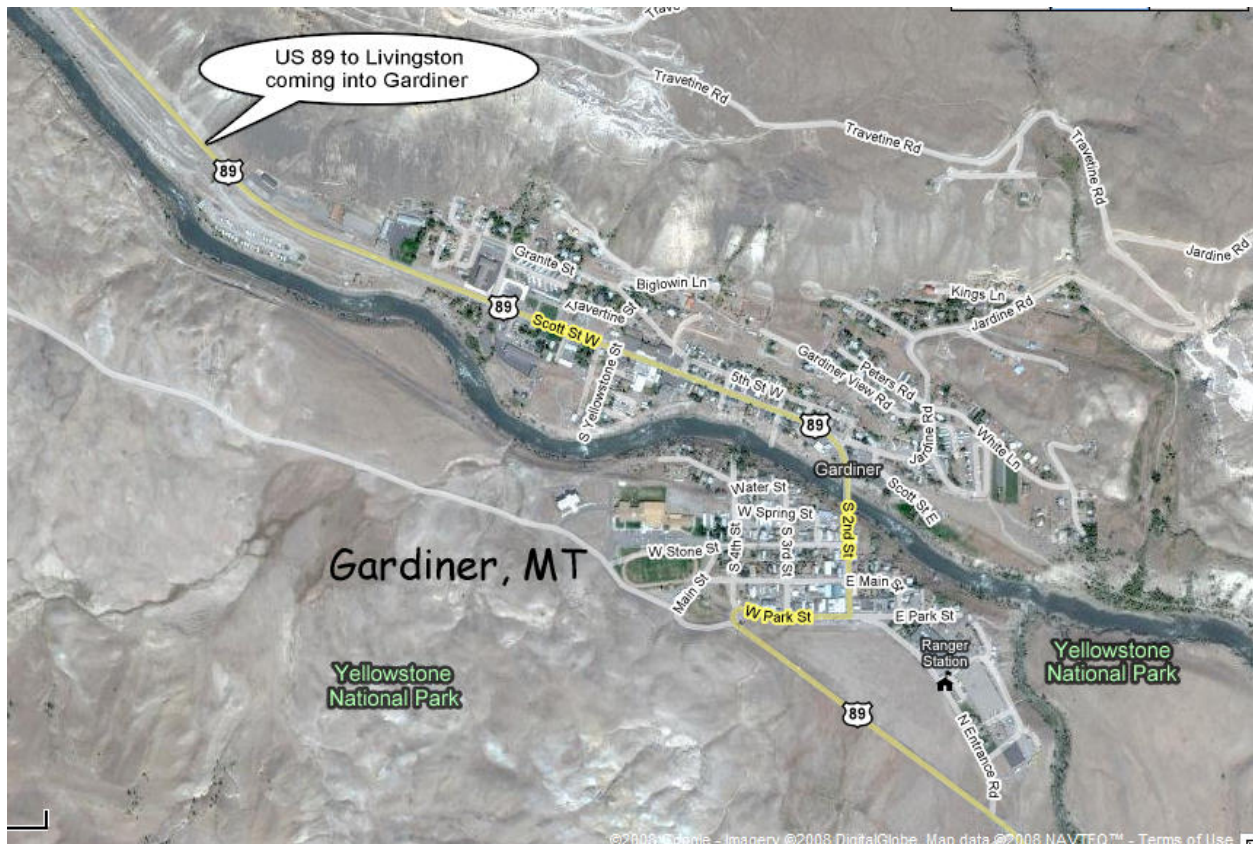
From I90 Livingston exit (333) head south to Yellowstone Park.

Go 52 miles to Gardiner, MT

as you enter Gardiner look for Hellroaring road on the left, just past the Comfort Inn as you enter town.

Proceed up Hellroaring a short distance till it ends.

see map below.



a close up of map showing Hellroaring and Granite St.



Turn right and proceed a hundred yards or so till you see 128 address on the left.
Our driveway is shown below.



head up drive.